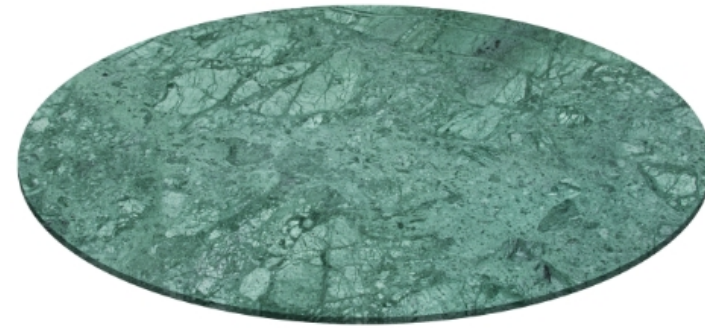


The granite table tops

Granite is a plutonic igneous rock that has cooled deep underground, with a granular texture. Its constituent minerals are mainly quartz, micas (biotite and/or muscovite), potassium feldspar (orthoclase) and plagioclase.

Colors according to availability at the quarry. The stones are natural and may have different hues and vein patterns than the samples shown below.



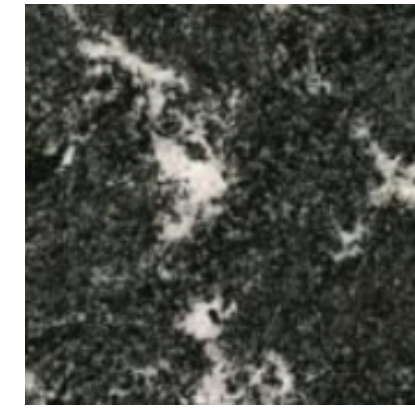
Zimbabwe tranché



Jet Black satiné



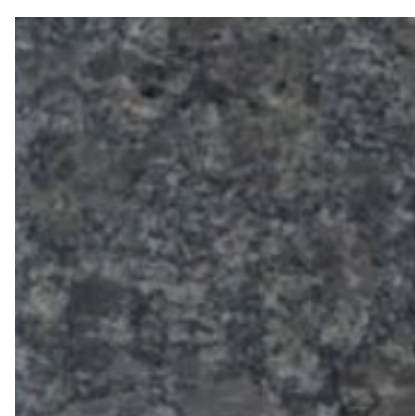
Noir Afrique poli



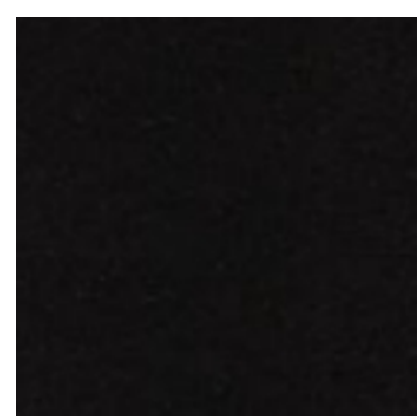
Porto Bianco Poli



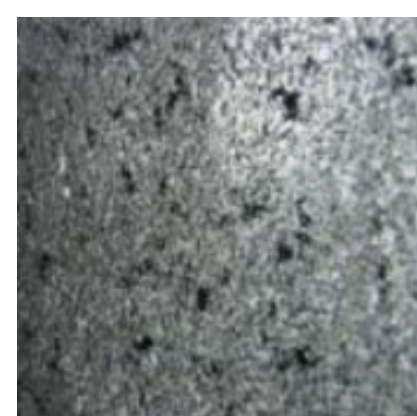
Star Galaxy poli



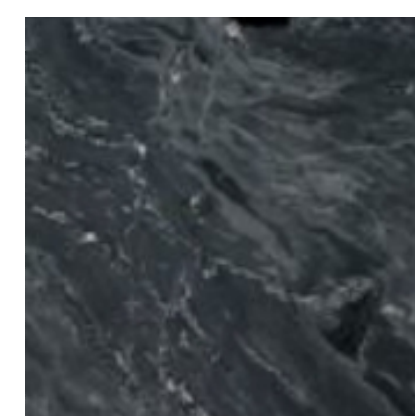
Steel Grey lether



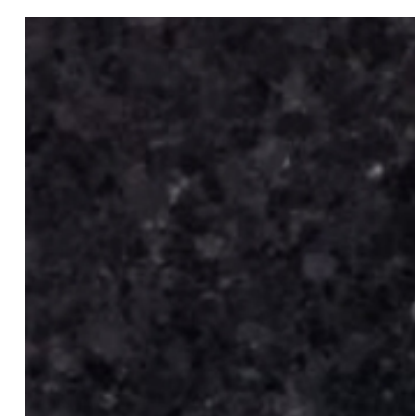
Zimbabwe poli



Noir Marcos lether



Silver Forest lether



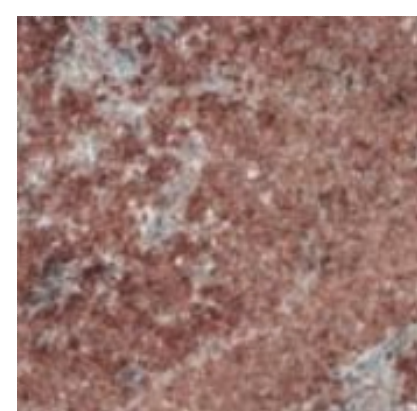
Angola Black satiné



Giallo Veneziano poli



Florenza White poli



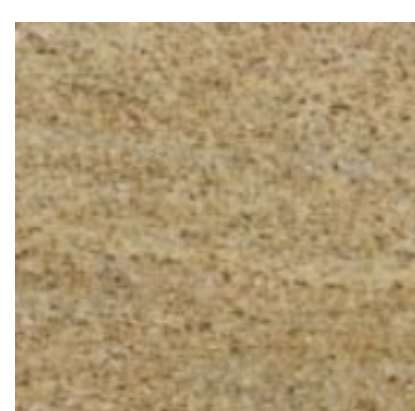
Desert Fire poli



Black Mosaic poli



Black Cosmic poli



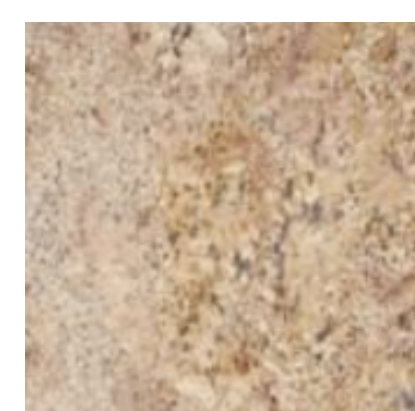
Giallo Colosséo poli



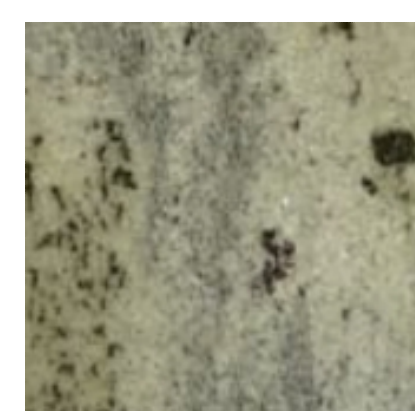
Black Virginia poli



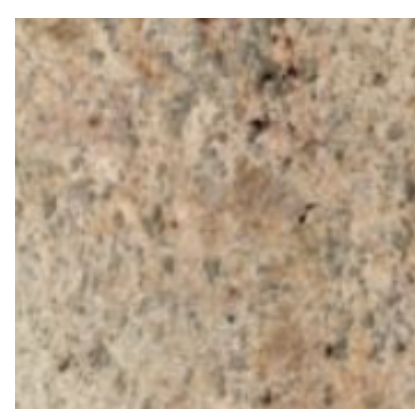
Labrador Bleu poli



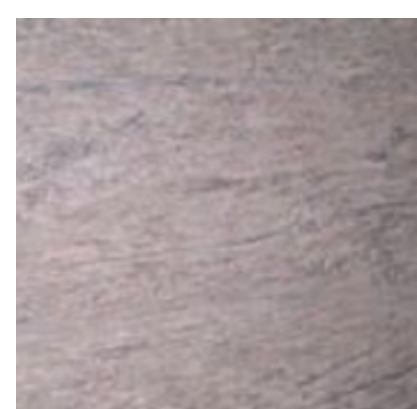
Juparna Florenza poli



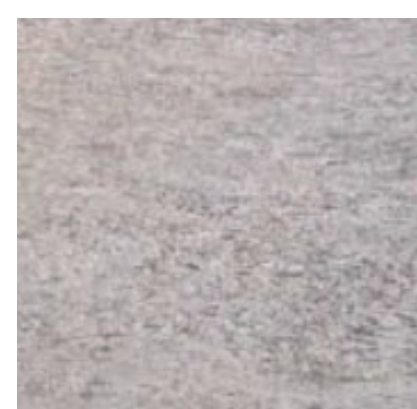
Vert Eucalyptus poli



Ghibli antico



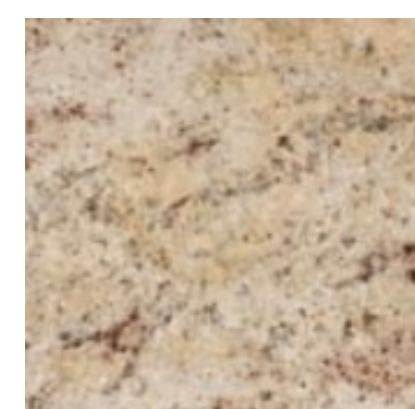
Ikon Brown poli



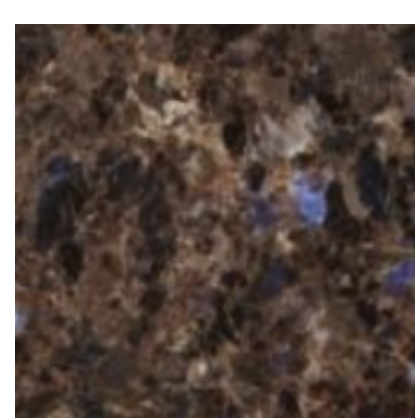
Ikon Brown flammé



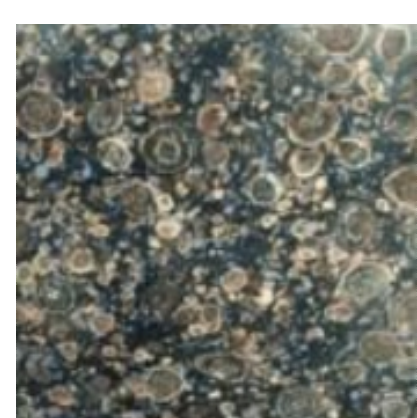
Indian Juparana poli



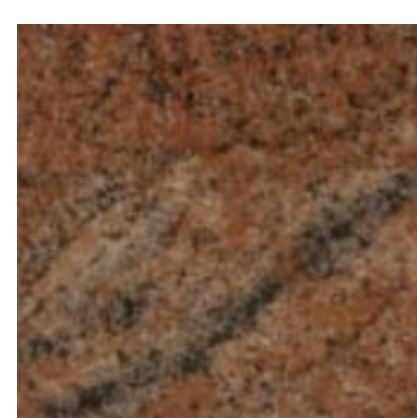
Ivory Brown poli



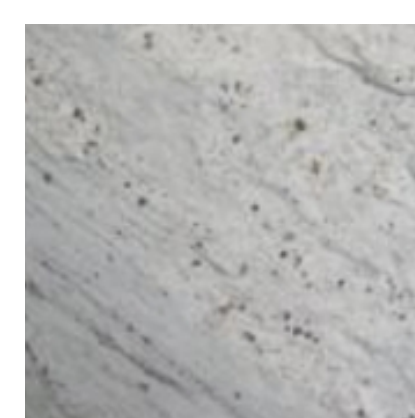
Labrador Antique poli



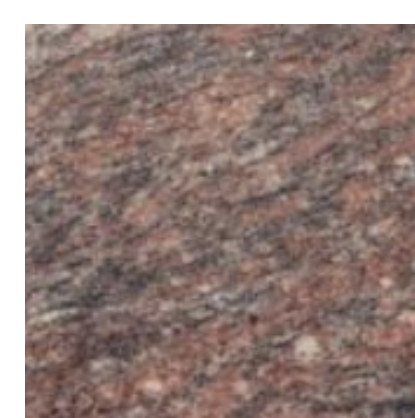
Ocean Blue poli



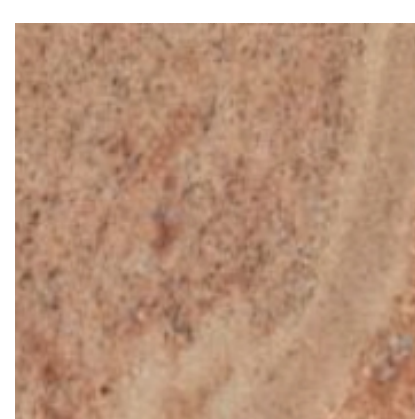
Rouge Multicolore poli



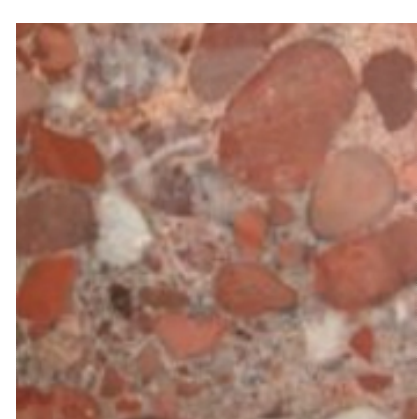
River White poli



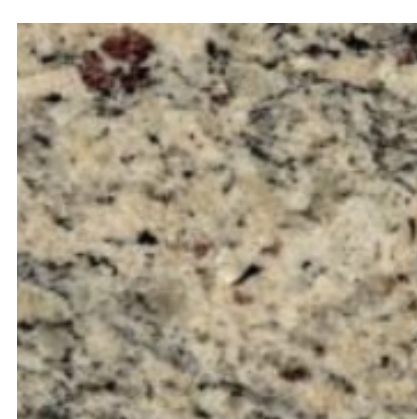
Rose Dalva poli



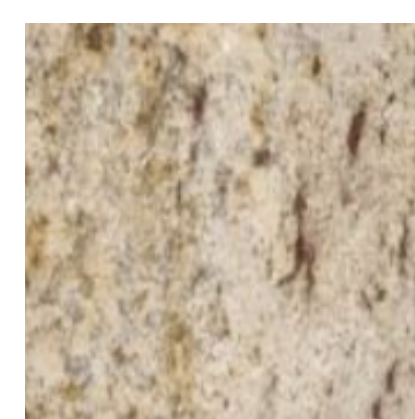
Rosso Alba poli



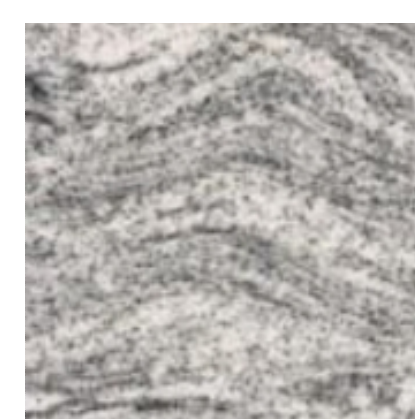
Rouge Marinace poli



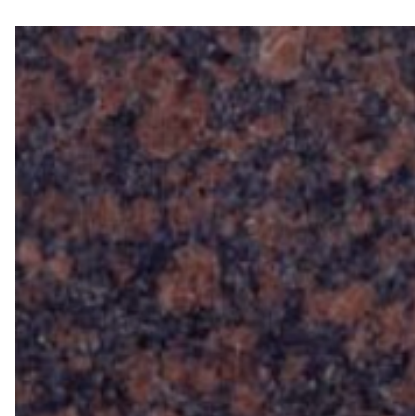
Santa Cecilia poli



Shivakashi poli



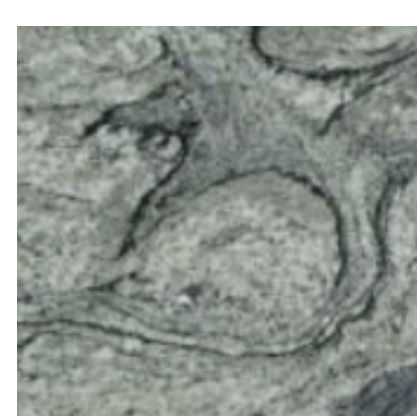
Silver Cloud poli



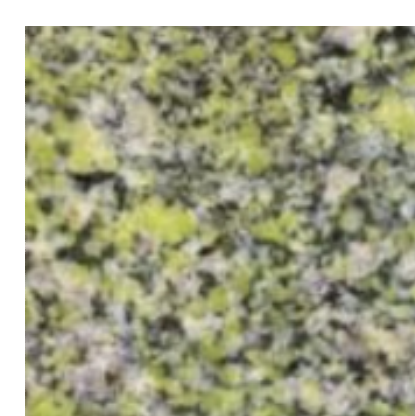
Tan Brown lether



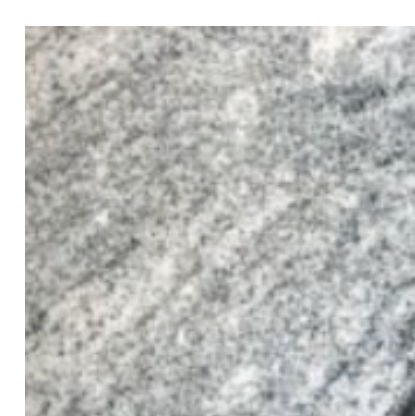
Vert Marinace poli



Piracema poli



Green Rose poli



Viscount White



Juparana Gold



Matrix