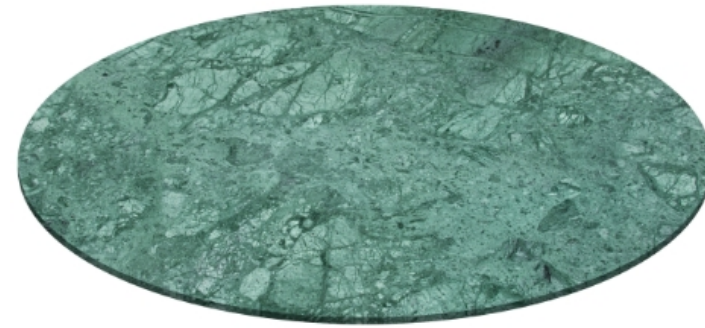


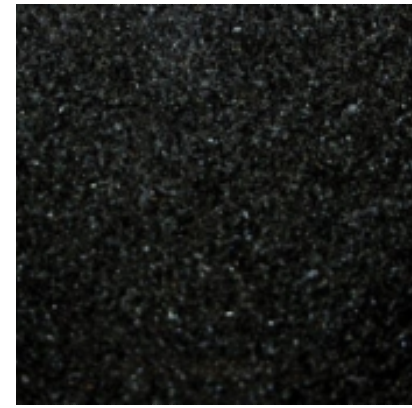
Couleurs plateaux en granit

Le granit est une roche magmatique plutonique, refroidie en profondeur, à texture grenue. Ses minéraux constitutifs sont principalement du quartz, des micas (biotite et/ou muscovite), des feldspaths potassiques (orthoses) et des plagioclases.

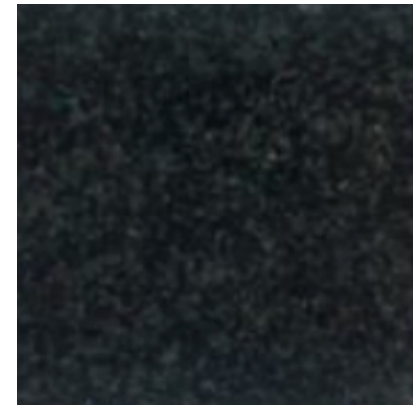
Couleurs selon disponibilité à la carrière.
Les pierres sont naturelles et peuvent présenter des teintes et des veinages différents des échantillons ci-dessous.



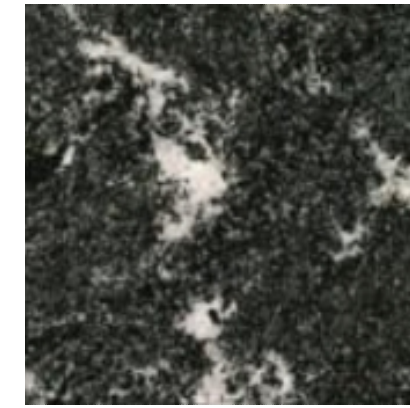
Zimbabwe tranché



Jet Black satiné



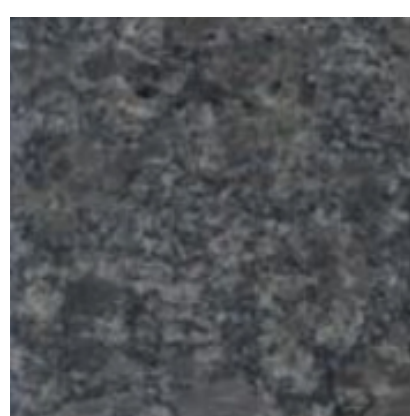
Noir Afrique poli



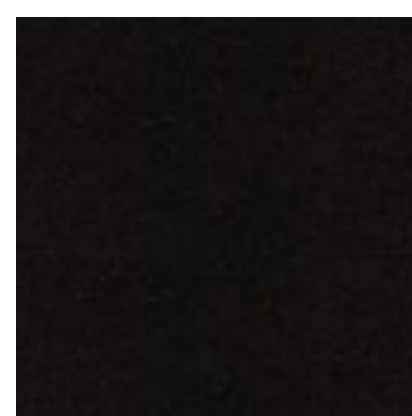
Porto Bianco Poli



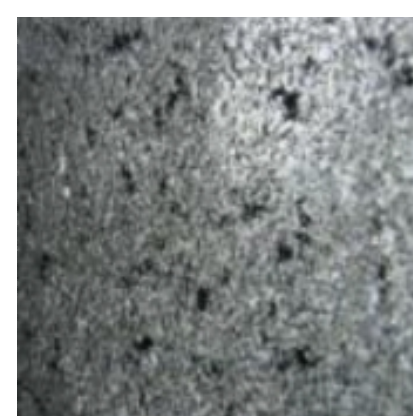
Star Galaxy poli



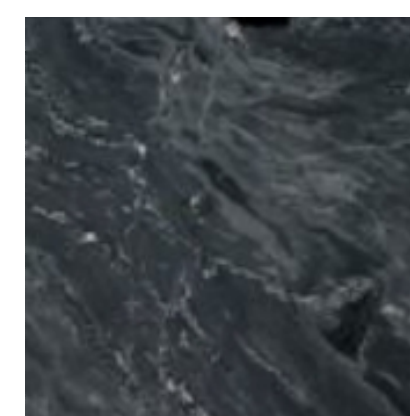
Steel Grey lether



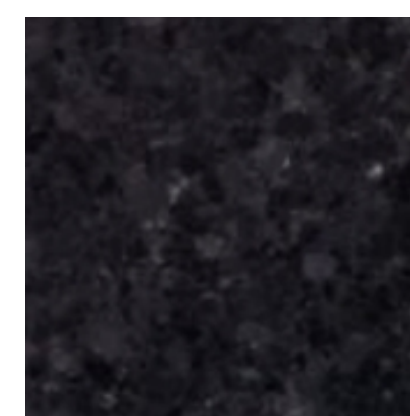
Zimbabwe poli



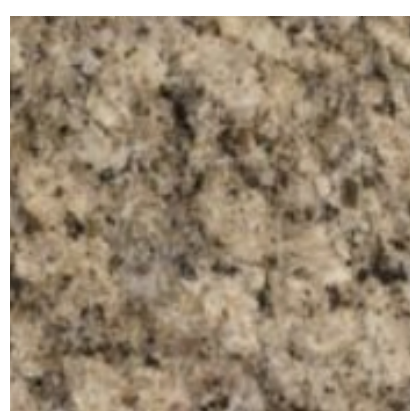
Noir Marcos lether



Silver Forest lether



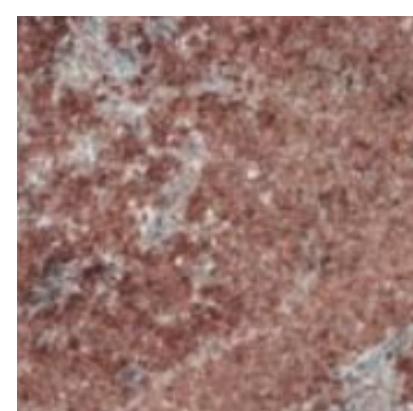
Angola Black satiné



Giallo Veneziano poli



Florenza White poli



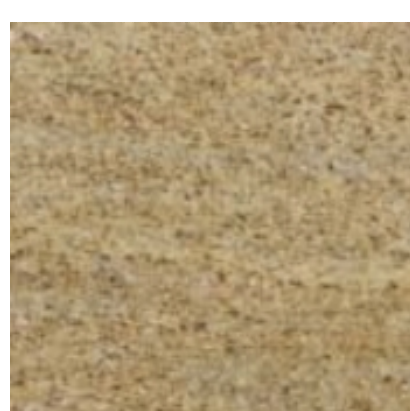
Desert Fire poli



Black Mosaic poli



Black Cosmic poli



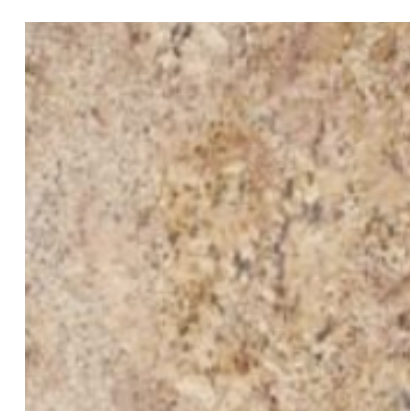
Giallo Colosséo poli



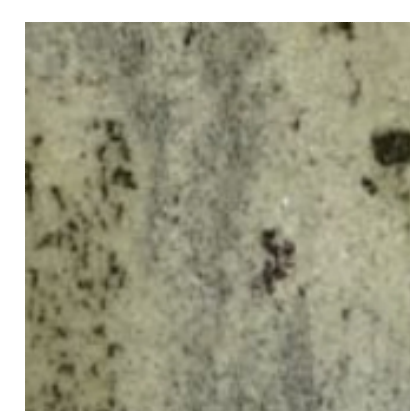
Black Virginia poli



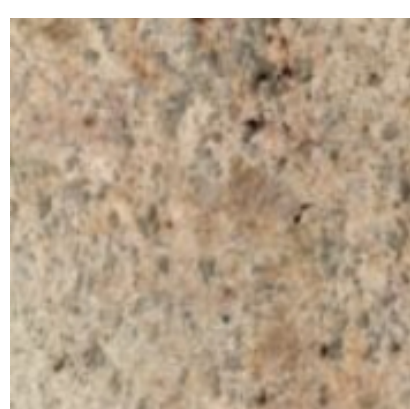
Labrador Bleu poli



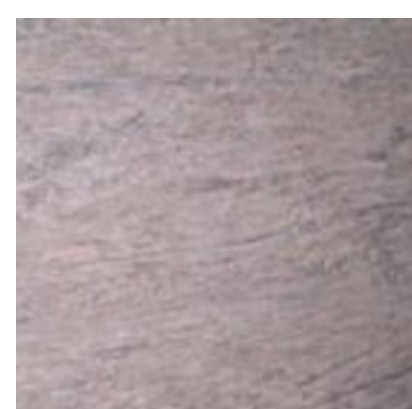
Juparna Florenza poli



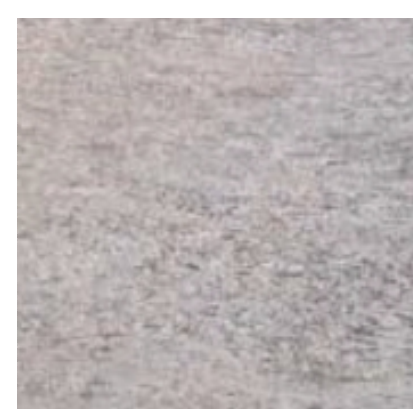
Vert Eucalyptus poli



Ghibli antico



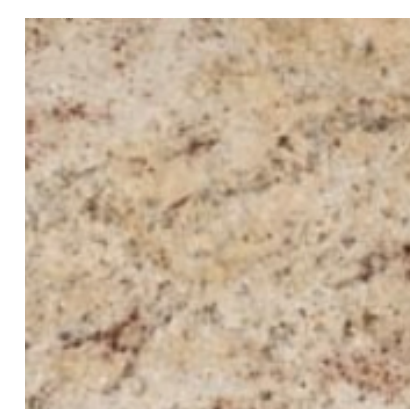
Ikon Brown poli



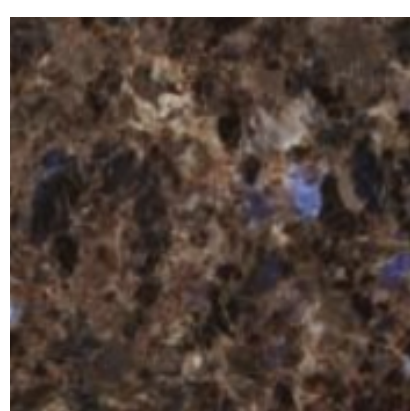
Ikon Brown flammé



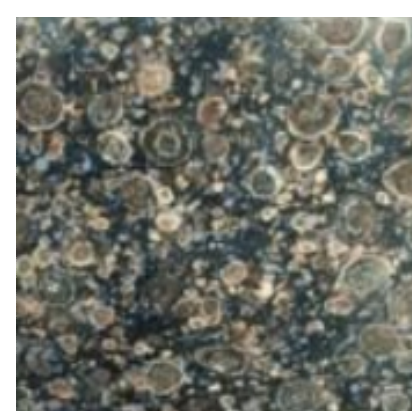
Indian Juparana poli



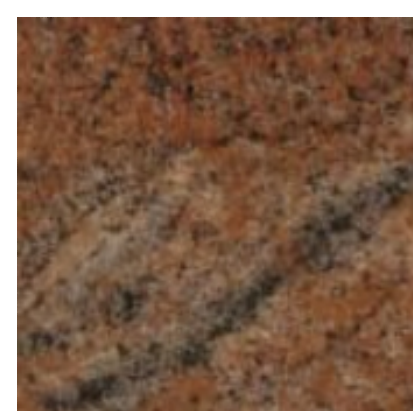
Ivory Brown poli



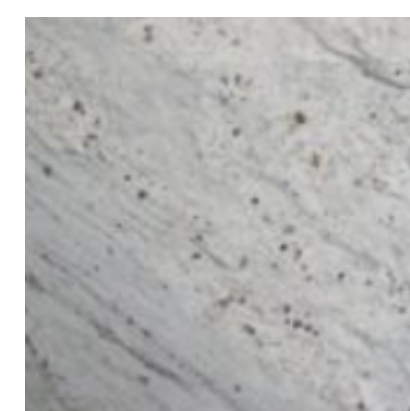
Labrador Antique poli



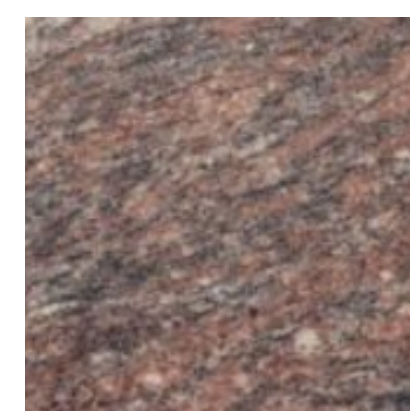
Ocean Blue poli



Rouge Multicolore poli



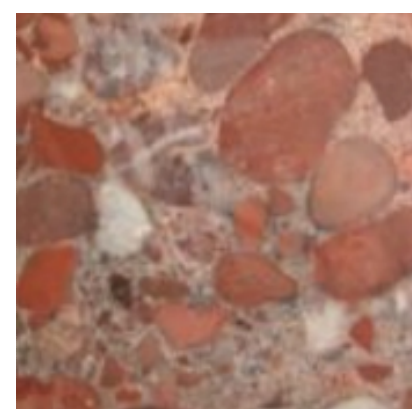
River White poli



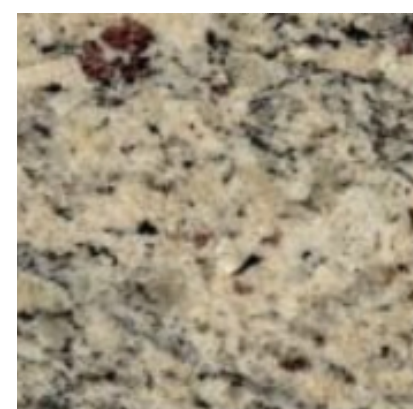
Rose Dalva poli



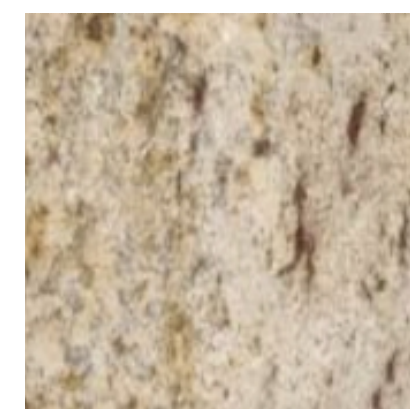
Rosso Alba poli



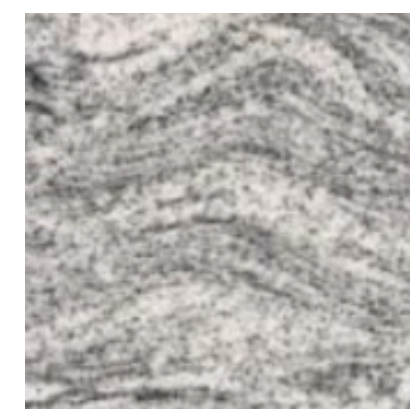
Rouge Marinace poli



Santa Cecilia poli



Shivakashi poli



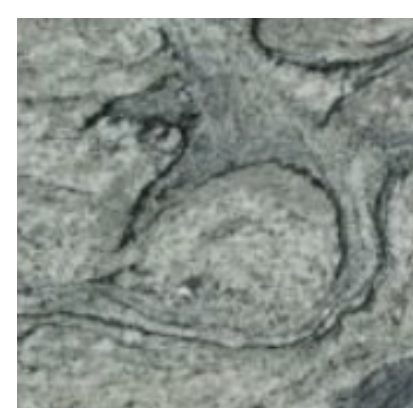
Silver Cloud poli



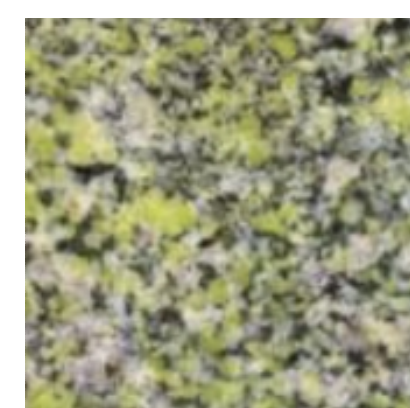
Tan Brown lether



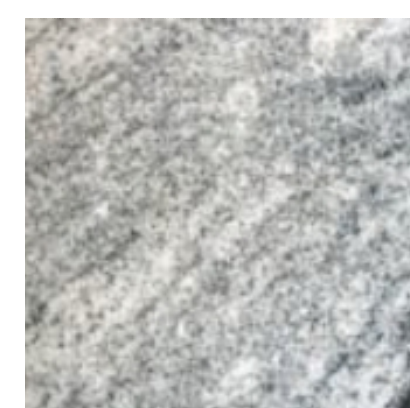
Vert Marinace poli



Piracema poli



Green Rose poli



Viscount White



Juparana Gold



Matrix